



Gusto is building **impactful opportunities** for its people + partners with LearnUpon

“I was prepared to fight for an LMS, but the investment versus the business impact of LearnUpon is outsized. We’re seeing real results. Two years ago, I had to do the storytelling to paint that picture, and now we’re reaping the rewards.”

Jaclyn Anku | Partner Education at Gusto

Gusto is an award-winning people platform, providing payroll, benefits and HR to 200,000+ US businesses. On a mission to create a world where work empowers a better life, Gusto uses LearnUpon to drive measurable business impact and build new opportunities for its 1,500 people and 10,000+ partners, everywhere.

[Read their story](#)

INDUSTRY

Payroll & HRM Software

REGION

AMER

USE-CASE

Employee, Partner

GOALS

A scalable, user-friendly, and integrated training solution that would support rapid growth, align with Gusto’s brand values, and demonstrate business impact.

CHALLENGE

- + Limited ability to grow partnerships with no formal partner education
- + Difficulty proving training’s impact, with lack of integrations and reporting
- + Less opportunity for employee growth due to not fit-for-purpose training solution

SOLUTION

- + Grow with Gusto, an employee training one-stop-shop
- + Formalized partner training and certifications delivered via LearnUpon
- + An integrated system of insights, linking LearnUpon with Degreed, Salesforce, and Zoom



52K+

Completions across 1,500 employees in 1 year



Leaders

Feel more confident in their ability to hire, lead, and empower



1,600

Partners certified across 1,000 partner firms in 1 year



3x

Lift in client additions by certified partners vs non-certified partners



10x

Higher likelihood of certified partners referring new partners



Unlock the power of learning with LearnUpon LMS

Trusted by leaders from the world's most innovative companies

zendesk

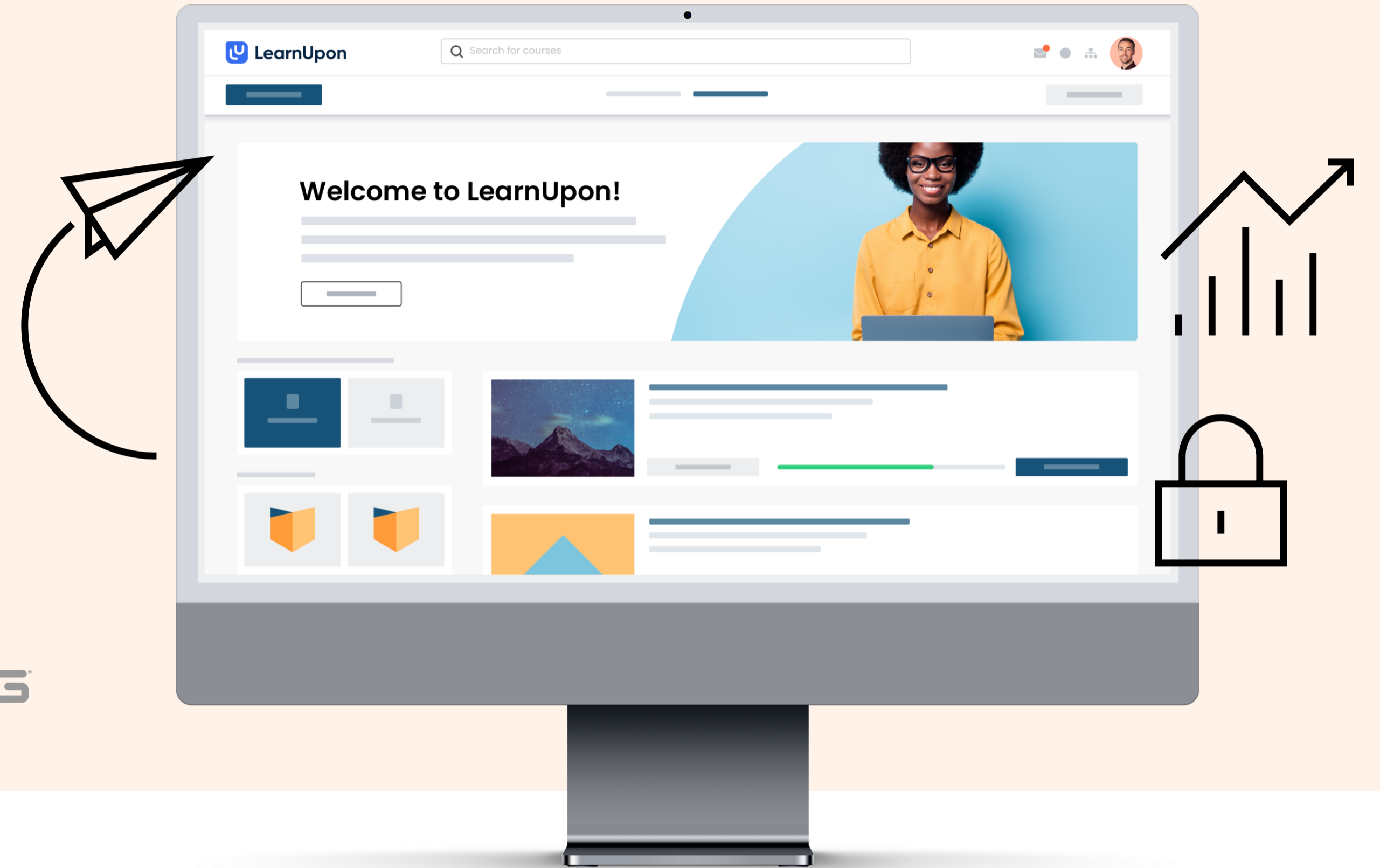
logitech

twilio

gusto

USA FOOTBALL

PING



Ready to get started with LearnUpon?

United States/Canada
718 Arch Street, PA 19106,
Philadelphia
+1 888 908 3960

Ireland/UK
D07 DHT3, Dublin
IRE: +353 1 531 0121
UK: +44 203 642 7679

Australia/New Zealand
NSW, 2010,
Sydney
+61 283 111 209

LearnUpon.com
 hello@learnupon.com
 @learnupon
 @lifeatlearnupon

[Schedule a demo](#)